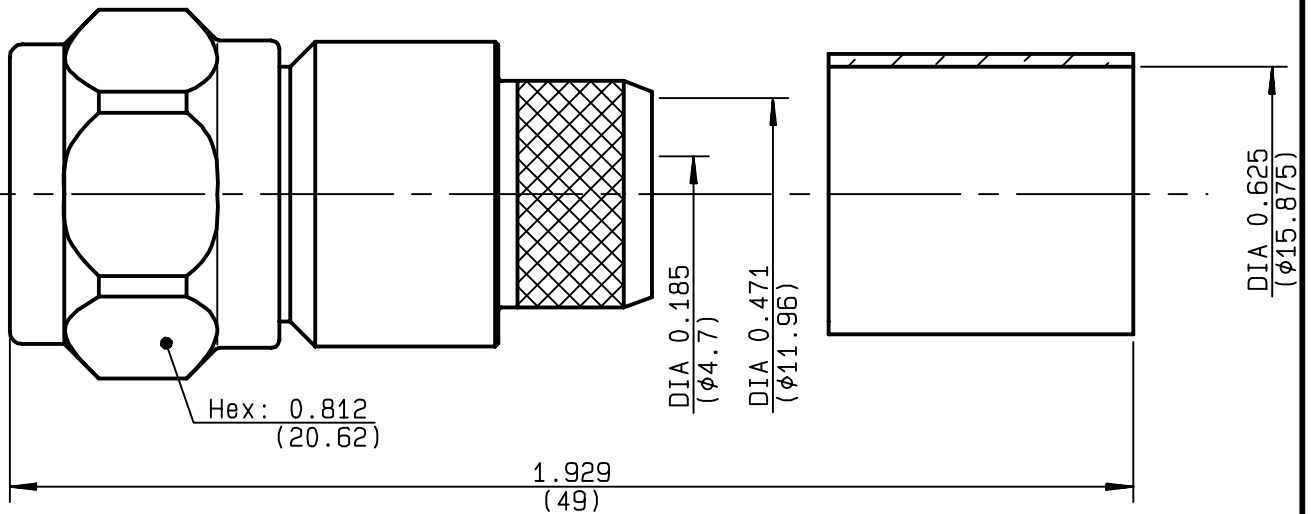


**STRAIGHT PLUG CRIMP TYPE
CABLE 15.2/50 LMR600**

R161.079.200
SERIES N



NOMINAL IMPEDANCE	50 Ω	CABLES : LMR 600	
FREQUENCY RANGE	0-11 GHz		
TEMPERATURE RATING	-55/+155 °C		
V.S.W.R	TBD + x F(GHz)Maxi		
RF INSERTION LOSS	0.048 √F(GHz) dB Maxi		
VOLTAGE RATING	1400 Veff Maxi		
DIELECTRIC WITHSTANDING VOLTAGE	2500 Veff Mini		
INSULATION RESISTANCE	5000 MΩMini		OTHERS CHARACTERISTICS
HERMETIC SEAL	NA Atm.cm ³ /s		CABLE RETENTION 500 N Mini
LEAKAGE (pressurized only)	NA		CENTER CONTACT RETENTION
MECHANICAL DURABILITY	500 Cycles	Axial force - mating end 27 N Mini	
WEIGHT	gr	Axial force - opposite end 27 N Mini	
SPECIFICATION		Torque NA cm.N Mini	
		RECOMMENDED TORQUES	
		Mating 428 cm.N	
		Panel nut NA cm.N	
		Clamp nut NA cm.N	

CONNECTOR PARTS	MATERIALS	FINISH	(all values are given in micrometers)
BODY	BRASS	NICKEL 2	
OUTER CONTACT	BRASS	NICKEL 2	
CENTER CONTACT	BRASS	GOLD 0.8 OVER NICKEL 2	
INSULATOR	PTFE	-	
GASKET	SILICONE RUBBER	-	
OTHERS PIECES	BRASS	NICKEL 2	

ISSUE	CREATION DATE	FILE PART-NUMBER
9822B00	15/12/1995	95-0400-171



MASTRIANO

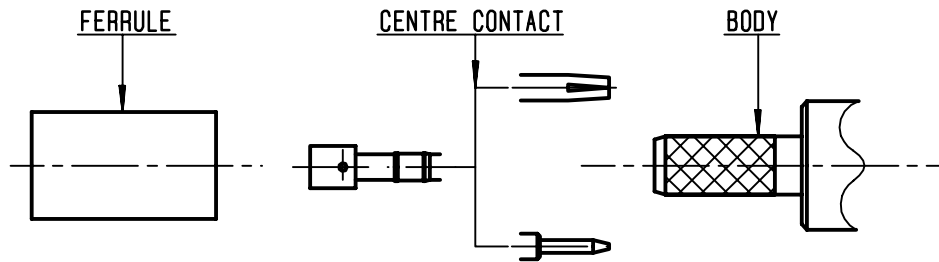
The information given here is subject to change without notice.
Design changes may be in order to improve the product .

Connect to the future



R161.079.200

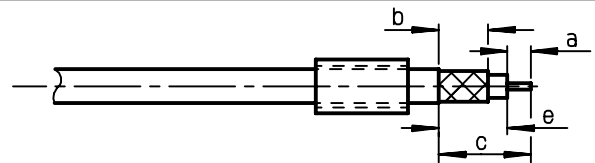
ISSUE 9822B00 SERIES N



①

Slide onto the cable the ferrule .
Strip the cable .

-
-
-

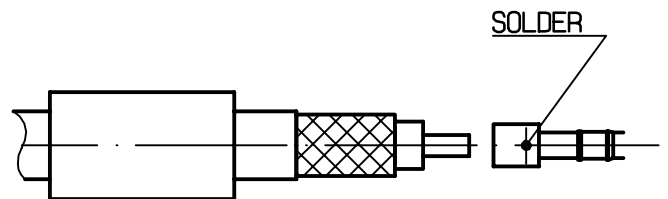


Stripping	a	b	c	d	e
inch	0.157	0.433	0.65	0	0.492
mm	4	11	16.5		12.5

②

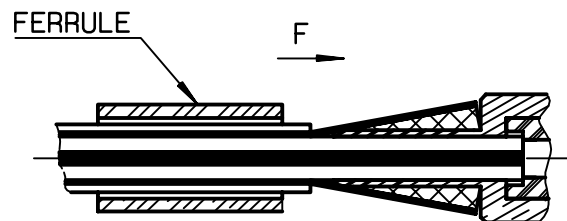
Slide on center contact until it bottoms against cable dielectric .
Solder center contact .

-
-
-
-



③

Fan the braid .
Slide cable into the body until contact snaps into place .
Slide ferrule over the braid .
(In direction F)



④

Crimp the ferrule with crimping tool R 282 293 000 (M22520/5-01)
+ dies R 282 235 166 (DANIELS Y1668)
Hex: 0.610 (15.49)
Cut the excess of braid .

-
-
-
-

